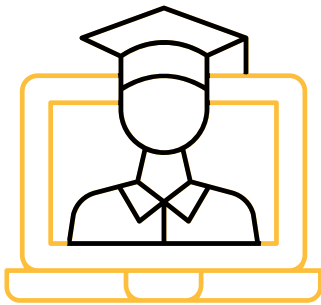


SERVICE BRIEF FOR

TABLETOP EXERCISES



Lodestone's Tabletop Exercises combine realistic threat scenarios with our years of experience to test the strength of your company's incident response plan. We partner with your key stakeholders to identify the exercises that best address the unique challenges your company might face in the wild. We examine your organization's security infrastructure, including your staff's ability to execute the incident response plan in place.

The engagement concludes with the presentation of a detailed report that details your company's strengths and weaknesses, along with recommendations to improve your readiness for a real-world event.

BENEFITS

- Identify key strengths and areas for improvement in your incident response plan (IRP) and business continuity plans (BCPs).
- Increase cyber security awareness and strengthen communication pathways between designated internal responders.
- Empower your personnel to understand crucial roles and procedures during a cyber security incident.

OVERVIEW

A Tabletop Exercise brings together Lodestone professionals and various stakeholders within your company, including executives, IT security, and department heads. We design one or more scenarios, incorporating any areas of particular concern, that provide real-world experience with security incidents your business is likely to face. These are designed to test your organization's people, processes, and technologies to enhance cyber readiness without the risk and damage caused by an actual cyberattack.

WHY LODESTONE

Lodestone is a global cybersecurity firm committed to helping clients prevent, investigate, and prepare for security incidents. It was built from the ground up to offer an innovative, behavior-based approach to proactive cybersecurity and digital forensics and incident response (DFIR). We are comprised of top investigative talent and offensive security experts from several of the world's largest cybersecurity firms, as well as military veterans and former members of national security organizations, including the Federal Bureau of Investigation (FBI) and the National Security Agency (NSA). We combine this expertise with our unique understanding of legal requirements through our relationship with our parent company, Beazley, which has been at the forefront of cyber insurance for over a decade. Through this relationship, Lodestone has developed a unique understanding of the intersection between insurance and cybersecurity while preventing, preparing for, and responding to some of the toughest security challenges that industries face today.

Compliance

Since its founding as a subsidiary of Beazley in 2017, Lodestone has offered its customers insight into both cybersecurity and the cyber insurance industry. We help companies align and stay compliant with cyber insurance coverage requirements. In addition, we offer discounts to channel partners to form long-term relationships.

Security Focus

Lodestone's experts live and breathe cybersecurity and are committed to helping customers face some of the biggest challenges of their careers. We do not sell vendor security products – our offerings are purely service-focused, and any third-party tools we recommend are the product of genuine, vendor-agnostic, and tested endorsement, not business deals.

Expertise

Lodestone's approach to Incident Response is to have the top cybersecurity experts in the world, as the lead, and as the touchpoint, when responding to cybersecurity incidents. This is done with the backing of comprehensive, real-time threat intelligence to provide clients with protection across the life cycle of a potential security event or incident.

Tailored Approach

We understand the individual challenges of every situation and consider the human side of the equation, never taking a "one size fits all" approach. We blend design, threat intelligence, and technology with human insights to provide clients with the greatest cybersecurity advantage.

Threat Intelligence

Our deep understanding of threat actor tactics, techniques, and procedures (TTPs) is based on decades of experience in DFIR and the diligent gathering of threat intelligence from all possible sources.

Agility

Time is of the essence before, during, and after an intrusion. We stand ready to move in quickly and effectively at the first sign of an intrusion.

Team Experience

1000+
ENGAGEMENTS

200+ **YEARS**
COMBINED EXPERIENCE

50+
CERTIFICATIONS

Experts Unlike Anyone Else

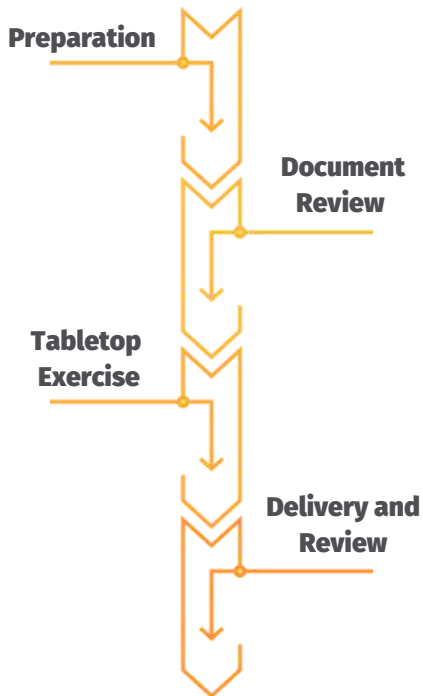
EX- MILITARY
LAW ENFORCEMENT
INTELLIGENCE
TOP CYBER TECH
TOP CONSULTING
FORTUNE 100 ENTERPRISE

Global Presence - NA/Europe



METHODOLOGY

The Lodestone Tabletop Exercise is comprised of these primary phases:



- **Preparation** – We work with you to identify any particular scenarios your organization is particularly concerned about and determine what tabletop exercise or exercises would be performed. In addition, our experts are available to make recommendations based on your industry and other unique factors to determine what scenarios would reflect a security incident your company is most likely to face.
- **Document Review** – Lodestone experts review your existing IRP and relevant BCPs. If no such documents exist or have been finalized, we prepare you to capture the necessary information to build these out with discoveries made during the testing process.
- **Tabletop Exercise** – The tabletop exercise is performed either on-site or remotely, as preferred by your organization. Depending on the level of engagement, this may consist of a high-level walkthrough for executives or a highly technical 2-hour test.
- **Delivery and Review** – We compose a report based on the results of the exercise that covers response, communication, and adherence with existing security policies by your stakeholders and other personnel involved. This includes key wins and areas for improvement that will strengthen your company against a real attack. We provide our report to you and present our findings, walking through the details therein and answering any questions.

DURATION AND DELIVERABLES

The Tabletop Exercise varies in duration based on the size of your environment and the areas being included within the testing. In general, it typically takes one month.

As part of the engagement, Lodestone will provide a Tabletop Exercise Report that provides detailed information on the results of the exercises, including key strengths and areas for improvement.

Learn more at www.lodestone.com

Connect with us:

320 East Main Street, Lewisville, TX 75057, USA

Tel: +1-203-307-4984

info@lodestone.com

©2022 Lodestone

Lodestone Security is a wholly owned subsidiary of Beazley plc. Lodestone provides computer security and cyber security consulting services. Lodestone does not provide insurance services and client information obtained by Lodestone is not shared with Beazley claims or underwriting. Likewise, client information obtained by Beazley claims or underwriting is not shared with Lodestone.